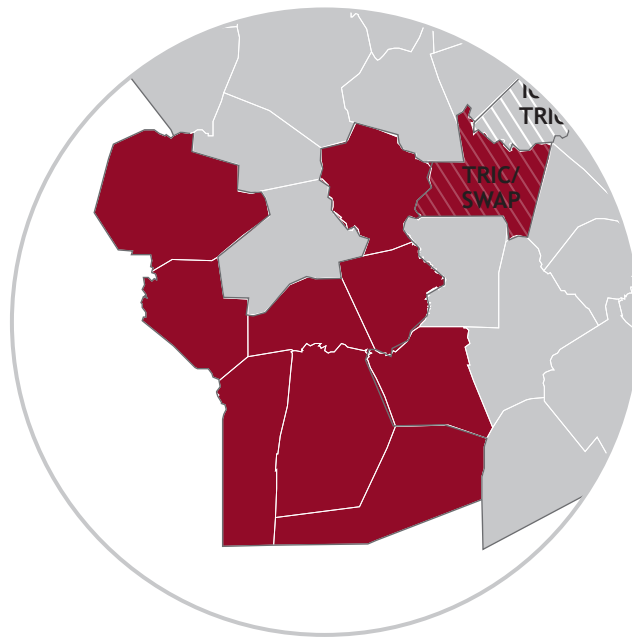


Southwest Advisory Planning Committee (SWAP)

Transportation Needs, Construction Projects,
and Studies in Your Subregion



Fall 2017–Winter 2018



Bellingham • Dover • Franklin • Hopkinton • Medway • Milford • Millis • Norfolk • Sherborn • Wrentham

WHAT NEEDS DID THE MPO IDENTIFY IN SWAP?

The Boston Region Metropolitan Planning Organization (MPO) conducted an assessment of transportation needs in the Boston region to inform the MPO's current Long-Range Transportation Plan (LRTP), *Charting Progress to 2040*. The MPO staff identified existing transportation conditions and made projections of future conditions and demand on the system. We also asked you about your transportation needs and the opportunities to improve transportation in your communities. The resulting Needs Assessment serves as a tool for planning the region's future transportation network and prioritizing the MPO's limited funding for transportation projects and studies.

Below are some of the needs that we identified in your subregion during our assessment and past visits to SWAP. For more information, please refer to the *Charting Progress to 2040 Needs Assessment* report and applications on our website: bostonmpo.org/lrtp_needs.

Needs identified during Charting Progress to 2040 development

Location of identified need	Municipalities	Top 25 Highway Crash Location	Top 200 Intersection Crash Cluster	HSIP Crash Cluster	Truck Crash Cluster	Pedestrian Crash Cluster	Bicycle Crash Cluster	Priority Congested Location	Activity undertaken to address need
Route 16 (East Main Street)	Milford		●	●	●				
Interstate 495 at Route 126 (Hartford Ave)	Bellingham		●	●	●				
Interstate 495 at Route 1A (South Street)	Wrentham		●	●	●				MPO-funded Route 140 study includes this interchange (see page 5) Candidate TIP Project: Wrentham - Construction of Interstate 495 and Route 1A ramps
Route 16	Holliston, Sherborn, Natick, Wellesley, Newton							●	

HSIP = Highway Safety Improvement Program.

- **Transit park-and-ride lots at more than 85 percent utilization:**
Franklin — Franklin Station on the Franklin Commuter Rail Line
- **Bicycle and Pedestrian Priorities:**
Sherborn — Upper Charles Trail

Needs and opportunities the MPO has heard from you

Safety

- The intersection at Route 140 and Pond Street in Franklin is unsafe.
- The ramp at Interstate 495 in Wrentham is unsafe.

Congestion Reduction

- Regional arterials, including Route 16 in Sherborn and Natick, are congested.

Transportation Options

- Insufficient parking at transit stations (including West Natick and Natick Center Stations) leads to roadway congestion and illegal parking; more parking is needed to meet transit rider needs.
- The viability of an east/west shuttle along the Route 109 corridor to Dedham should be explored.
- Commuter rail schedules are irregular.
- There is insufficient commuter rail capacity for reverse commuters.

WHAT PROJECTS HAVE BEEN FUNDED IN SWAP?

On May 25, 2017, the MPO endorsed the new Transportation Improvement Program (TIP), which documents all transportation construction projects that will receive federal funding over the next five years, during federal fiscal years (FFYs) 2018-22.

Below is a list of recent federally funded projects in SWAP that are supported by the MPO and MassDOT.

Recently Programmed TIP Projects:

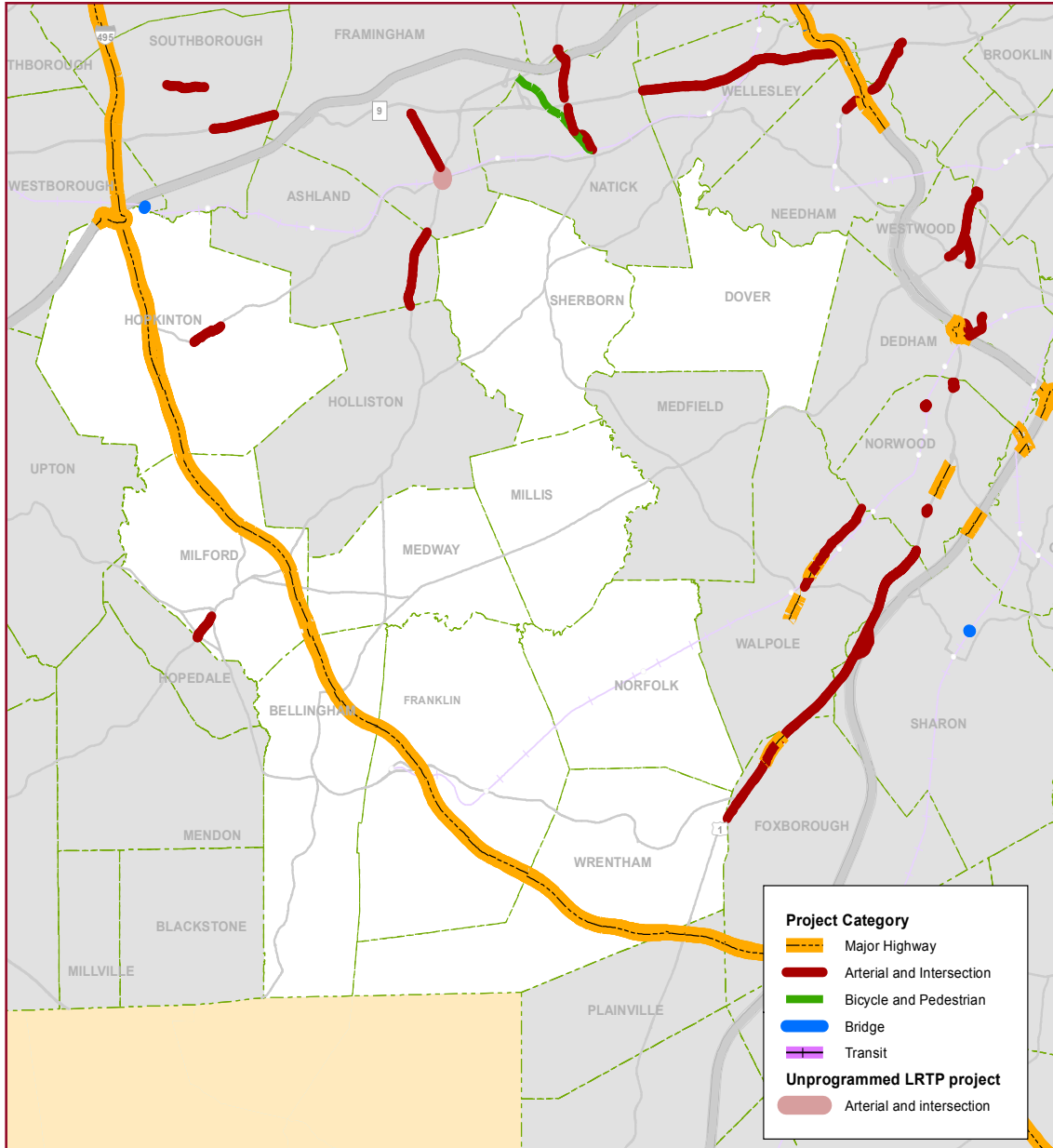
- Hopkinton — Signal and Intersection Improvements on Route 135
Status: MPO-funded and programmed in FFY 2019
- Milford and Hopedale — Resurfacing and Intersection Improvements on Route 16 (Main Street)
Status: MPO-funded and programmed in FFY 2019
- Foxborough, Franklin, Plainville, and Wrentham — Interstate Maintenance Resurfacing and Related Work on Interstate 495
Status: MassDOT-funded and programmed in FFY 2022
- Hopkinton and Westborough — Bridge Replacement: Fruit Street over CSX and Sudbury River
Status: MassDOT-funded and programmed in FFY 2018
- Hopkinton and Westborough — Reconstruction of the Interstates 90 and 495 Interchange
Status: MassDOT-funded and programmed in FFYs 2020-25

Recently Proposed TIP Projects:

- Wrentham — Major Infrastructure Project: Construction of Interstate 495 and Route 1A Ramps
Status: 25% design submitted
- Bellingham — South Main Street (Route 126) - Douglas Drive to Mechanic Street Reconstruction
Status: Not yet approved by the MassDOT Project Review Committee (PRC)
- Bellingham — South Main Street (Route 126) - Elm Street to Douglas Drive Reconstruction
Status: Not yet approved by the MassDOT PRC

For more information on the how the MPO funds projects and for a full listing of projects by municipality, please refer to our website: bostonmpo.org/tip.

**Projects Funded by the MPO and MassDOT in FFYs 2016–2022
(Programmed in the TIP) and Additional Projects Identified in the LRTP
(Not Yet Programmed in the TIP)**



WHAT TRANSPORTATION PLANNING STUDIES AND TECHNICAL ASSISTANCE PROJECTS HAS THE MPO UNDERTAKEN IN SWAP?

The MPO conducts studies through its Unified Planning Work Program (UPWP) that advance our understanding of the transportation system, new technologies, regulations, and travel preferences. The MPO also offers technical assistance to address transit, bicycle and pedestrian, and roadway issues—at no cost to municipalities.

Below is a list of studies and technical assistance projects undertaken in your subregion over the past five years.

- SWAP Regional Public Transit Feasibility Study (included support from the Metropolitan Area Planning Council)
Status: Completed in 2013
- Milford — Community Transportation Technical Assistance study of safety and operations at the intersection of Route 140 at South Main Street
Status: Completed in 2013
- Medway — Community Transportation Technical Assistance study of traffic signal feasibility at the intersection of Route 109 (Milford Street) at Trotter Drive
Status: Completed in 2015
- Milford — Safety and operations analysis of Medway Road at Kmart Driveway
Status: Completed in 2015
- Wrentham — Subregional Priority Roadway study of Route 1A from the Plainville town line to Route 140
Status: Underway

Note: The study area includes Interstate 495 at Route 1A (South Street), which is mentioned in the needs list on page 1.

NOW WHAT?

This fall, help us get started on our next LRTP, *Destination 2040*. As we embark on a new cycle of determining how to spend the federal transportation dollars that come into the Boston region, we want to hear about the transportation needs and opportunities to improve transportation in your community:

- What's working well with the transportation system in your community?
- Are there transportation barriers or mobility issues that prevent people from getting where they need to go?
- Are there transportation needs that you've heard from people of color, people with low incomes, older adults, youths, people with disabilities, and people with limited English proficiency?
- What changes or trends are occurring that might affect the transportation system and how you use it?
- What opportunities for improving the transportation system do you see now or in the near future?

We also welcome ideas for studies and technical assistance projects. Share your views with us during our visit to SWAP, or through any of the channels listed at bostonmpo.org/public_involvement.



**Southwest Advisory Planning Committee
(SWAP)**
Transportation Needs, Construction Projects,
and Studies in Your Subregion